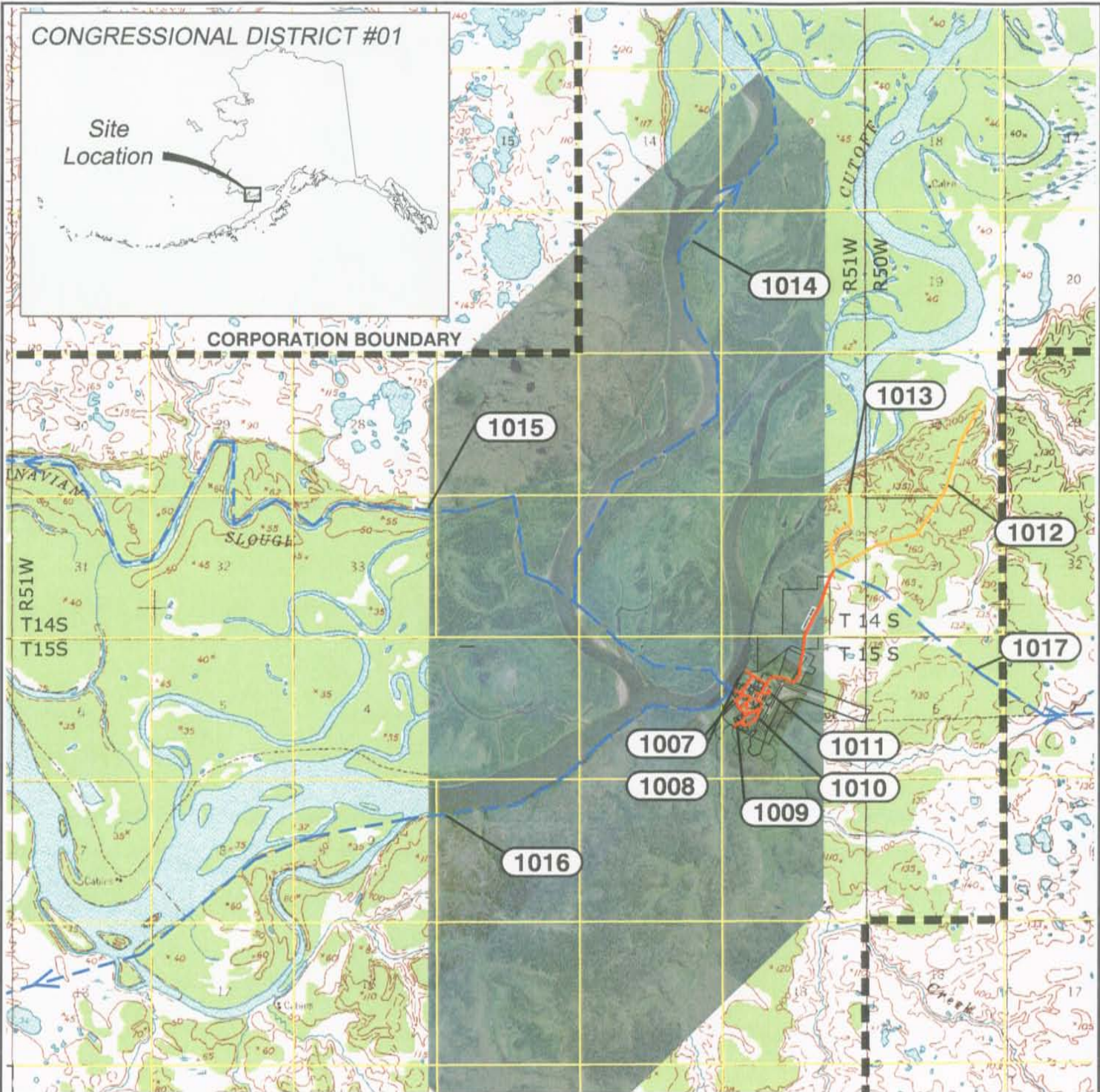


CONGRESSIONAL DISTRICT #01

Site Location

CORPORATION BOUNDARY



SHEET	ROUTE NO.	ROUTE NAME	ROUTE TYPE
NA	1001	UNNAMED ROAD	EXIST
NA	1002	LANDFILL ROAD	EXIST
NA	1003	MAIN STREET	EXIST
NA	1004	SCHOOL ROAD	EXIST
NA	1005	UNNAMED ROAD	EXIST
NA	1006	UNNAMED ROAD	EXIST
3	1007	CHURCH ROAD	EXIST
4	1008	COUNCIL ROAD	EXIST
5	1009	ALT RIVER ROAD	EXIST
6	1010	AIRPORT ACCESS	EXIST
7	1011	POWER PLANT ROAD	EXIST
8	1012	SAND PIT ROAD	PROPOSED
9	1013	GRAVEL PIT ROAD	PROPOSED
10	1014	EKWOK TRAIL	WINTER TRAIL
11	1015	DILLINGHAM TRAIL	WINTER TRAIL
12	1016	CLARKS POINT TRAIL	WINTER TRAIL
13	1017	LEVELOCK TRAIL	WINTER TRAIL

NOTE: ROUTES 1001-1006 ARE CURRENTLY IN INVENTORY

SOURCE: U.S.G.S. QUAD MAP
 QUAD NAME: NAKNEK(D-6)
 AERIAL PHOTOGRAPH: AEROMETRIC
 TOWNSHIP: 14S & 15 S
 RANGE: 50W & 51 W
 SECTIONS: SEE ROUTE MAPS
 SEWARD MERIDIAN



PORTAGE CREEK VILLAGE COUNCIL - RESERVATION 402
 PORTAGE CREEK, ALASKA
 2006 IRR INVENTORY UPDATE
 INVENTORY INDEX

Bristol
 ENVIRONMENTAL & ENGINEERING
 SERVICES CORPORATION
 Phone (907) 563-0013 Fax (907) 563-6713
 Project No. 27042

DATUM:	DATE	08/31/06	SHEET
NAD 83	DWN.	SLK	2
PROJECTION:	SCALE	1"=1 MI	of
ASP ZONE 6	APPRVD.	TMW	13