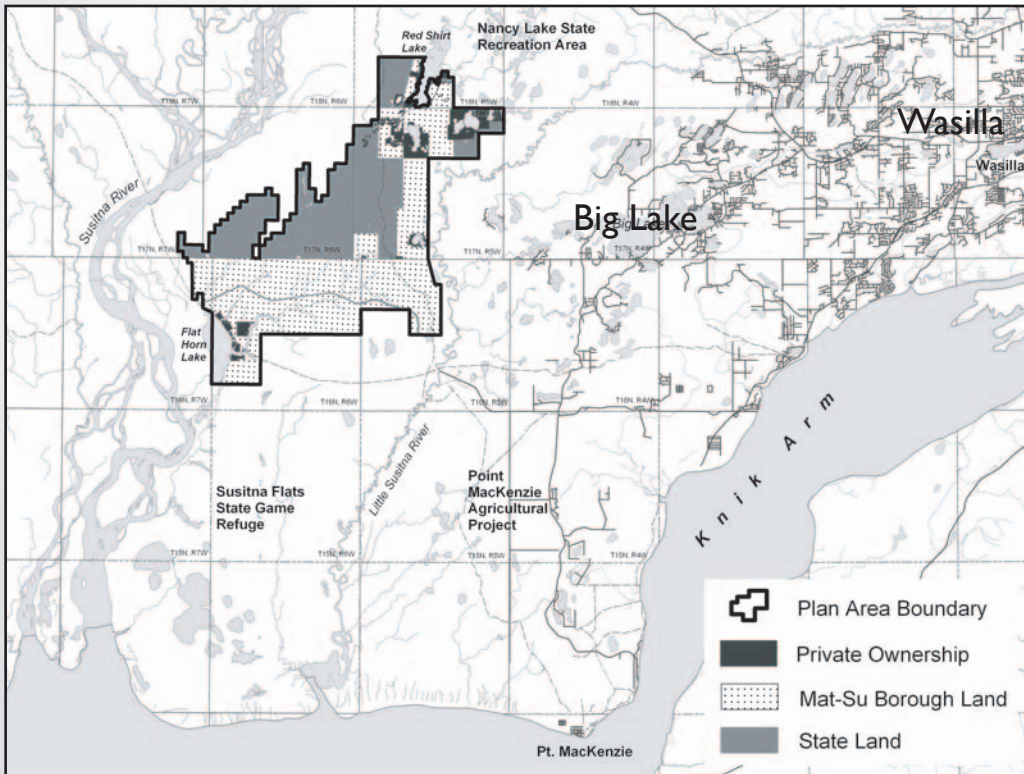


Fish Creek Management Plan Update

The Matanuska-Susitna Borough (MSB), working with Jade North, Agnew::Beck Consulting, various state agencies and the general public, is updating a Management Plan for Borough and State land west of Big Lake (see map below). Much has changed since the original Fish Creek Management Plan was adopted in 1984. This update is intended to reflect the needs and policies of the area today. This plan will prepare policies for the development and protection of these sites. Major issues to be addressed include:

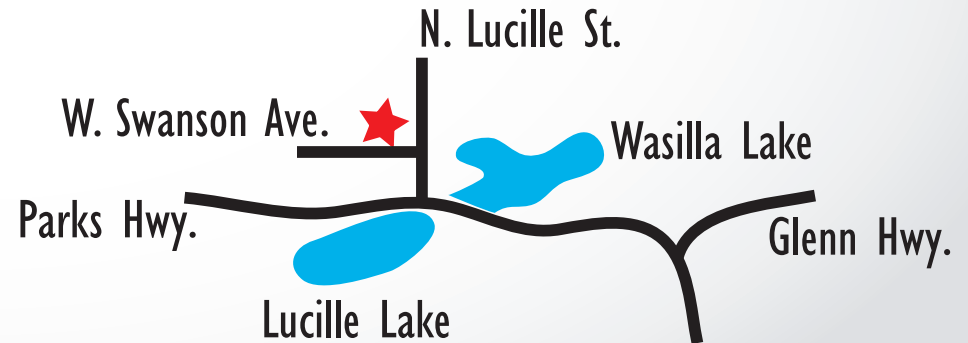
- agriculture
- extension of road network and other infrastructure
- protection of open space and habitat
- recreation and trails
- sales of land for residential development
- timber harvests



Public Workshop

May 9, 2007, 6:30-8:30 p.m.

Central MSB Public Safety Building
101 W. Swanson Ave.



Want more information?

Send your questions to Tomas Jensen of Agnew::Beck Consulting (tomas@agnewbeck.com) or call us at 907.222.5424 and we will keep you posted. Also visit the project website, www.agnewbeck.com.