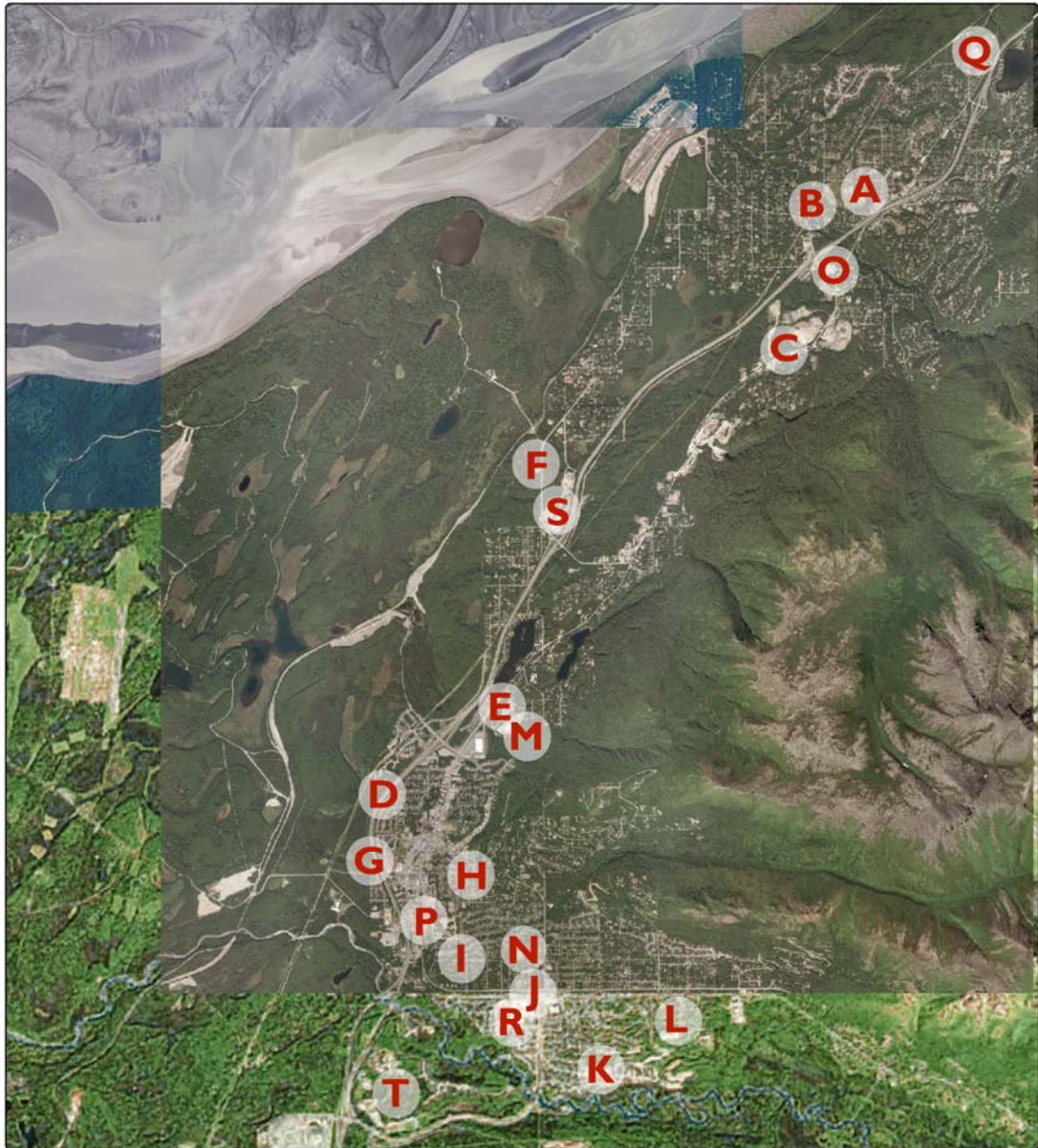


# APPENDIX E: EXISTING FIELD AND SPORTS FACILITIES

## Field and Sports Facilities, Chugiak - Eagle River



Alaska State Plane, Zone 4, NAD 1983  
January 21, 2008

Map by Agnew::Beck Consulting for Heritage Land Bank.



0 0.5 1 2 Miles

All data courtesy of Municipality of Anchorage.

Park Facilities			
<b>A.</b>	<b>Oberg American Legion ball field</b>	<ul style="list-style-type: none"> <li>- Pavilion</li> <li>- Swings</li> <li>- Baseball fields</li> <li>- Camper Host</li> </ul>	<ul style="list-style-type: none"> <li>- Electric</li> <li>- Water</li> <li>- RAP Parking</li> </ul>
<b>B.</b>	<b>Russell Oberg Soccer fields</b>	<ul style="list-style-type: none"> <li>- Pavilion</li> <li>- Playground</li> <li>- Equipment storage</li> <li>- Soccer fields (3)</li> </ul>	<ul style="list-style-type: none"> <li>- City water</li> <li>- Basketball court</li> <li>- RAP Parking</li> </ul>
<b>C.</b>	<b>Loretta French Park</b>	<ul style="list-style-type: none"> <li>- Baseball fields (5)</li> <li>- Equestrian area</li> <li>- Archery range</li> <li>- Trails</li> <li>- Pavilion</li> </ul>	<ul style="list-style-type: none"> <li>- Playground</li> <li>- Lighted sledding hill</li> <li>- Maintenance building</li> <li>- Concessions building</li> </ul>
<b>D.</b>	<b>Schroeder Park</b>	<ul style="list-style-type: none"> <li>- Covered pavilion</li> <li>- Sand volleyball</li> <li>- Paved tennis courts</li> <li>- Paved basketball courts</li> </ul>	<ul style="list-style-type: none"> <li>- Disc golf</li> <li>- Play equipment</li> <li>- Multi-use field</li> </ul>
<b>E.</b>	<b>Harry J. McDonald Memorial Center</b>	<ul style="list-style-type: none"> <li>- Olympic-size ice surface</li> <li>- Para-glider/Hang Glider landing zone</li> </ul>	Note: Facility expansion plans include indoor multi-use artificial turf.
<b>F.</b>	<b>Beach Lake Chalet</b>	<ul style="list-style-type: none"> <li>- Cross-country lighted ski trails (19km)</li> <li>- Chalet with kitchen and meeting rooms</li> </ul>	
<b>G.</b>	<b>Targhee Park</b>	<ul style="list-style-type: none"> <li>- Picnic areas</li> <li>- Fenced ADA playground</li> <li>- Basketball court</li> </ul>	
<b>H.</b>	<b>Eliassen Park</b>	<ul style="list-style-type: none"> <li>- Paved trails</li> <li>- Play equipment</li> <li>- Picnic tables</li> <li>- Covered pavilion</li> </ul>	<ul style="list-style-type: none"> <li>- Basketball court</li> <li>- Bocce Ball court</li> </ul>
<b>I.</b>	<b>Palos Verde's Park</b>	<ul style="list-style-type: none"> <li>- Pocket park w/ basketball</li> <li>- ADA play equipment</li> </ul>	
<b>J.</b>	<b>Chugach State Park/Lions Park</b>	<ul style="list-style-type: none"> <li>- Baseball/Softball fields (6)</li> <li>- Football fields (2)</li> <li>- Covered pavilions</li> <li>- Paved tennis courts</li> </ul>	<ul style="list-style-type: none"> <li>- Paved basketball court</li> <li>- Sand volleyball</li> <li>- Playground</li> <li>- Concessions building</li> </ul>

<b>Public School Facilities</b>		
<b>K.</b>	<b>Alpenglow Elementary School</b>	- Multi-use field space - Playground
<b>L.</b>	<b>Ravenwood Elementary School</b>	- Multi-use field space - Playground
<b>M.</b>	<b>Fire Lake Elementary School</b>	- Multi-use field space - Playground - Basketball court
<b>N.</b>	<b>Homestead Elementary School</b>	- Baseball field - Playground
<b>O.</b>	<b>Chugiak Elementary School</b>	- Basketball courts - Baseball field - Playground
<b>P.</b>	<b>Eagle River Elementary School</b>	- Baseball field - Multi-use field space - Playground
<b>Q.</b>	<b>Mirror Lake Middle School</b>	- Track - Multi-use fields (2) - Football/Soccer field - Groomed ski trails (5km)
<b>R.</b>	<b>Gruening Middle School</b>	- Track - Baseball fields - Multi-use field - Basketball courts
<b>S.</b>	<b>Chugiak High School</b>	- Track - Football field (Multi-use/artificial turf) - Soccer field - Tennis courts
<b>T.</b>	<b>Eagle River High School</b>	- Track - Soccer fields - Football field (Multi-use/artificial turf) - Baseball/Softball fields